

Corning OptiTip MT Connector Inspection with FBPT-COD-MTx Kit

The Corning OptiTip MT Connector is an environmentally and mechanically hardened fiber optic connector for outside plant use cases. The connector features an MT ferrule with up to 12 fibers in a single row. The ferrule can be flat or angled polished. Single mode angled polish is most common in outside plant networks. There are two OptiTip MT connector variants — a plug and a receptacle. The plug and receptacle are mated together to mechanically connect multiple fibers.





OptiTip MT Plug



OptiTip MT Receptacle

Inspection Kits

VIAVI offers OptiTip MT connector inspection kits for the FiberChek and P5000i probe microscopes. The kits contain an inspection tip and guides for plugs and receptacles. There is a kit for MT flat polish ferrules (typically with multimode fibers) and a kit for MT angled polish ferrules (typically with single mode fibers).

Catalog Number	Kit Description	Kit Contents	
FBPT-COD-MT	OptiTip MT Flat Polish Inspection Kit	FBPT-COD-MTOA-1 Tip FBPT-COD-MTPG Plug Guide FBPT-COD-MTRG Receptacle Guide	
FBPT-COD-MTA	OptiTip MT Angled Polish Inspect Kit	FBPT-COD-MTOA-1 Tip FBPT-COD-MTAPG Plug Guide FBPT-COD-MTARG Receptacle Guide	

How To Inspect OptiTip MT Connectors

1. Identify kit contents



Receptacle Guide



Plug Guide



Inspection Tip

2. Attach the tip to the microscope



P5000i Probe Microscope



FiberChek Probe Microscope

3. Attach the appropriate guide to the tip



Receptacle guide to inspection tip



Plug guide to the inspection tip

4. Mate the connector to the guide



OptiTip receptacle to receptacle guide



OptiTip plug to plug guide

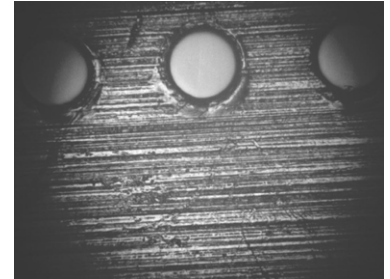
5. Focus the microscope



P5000i manual focus



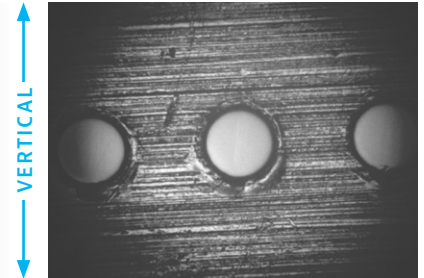
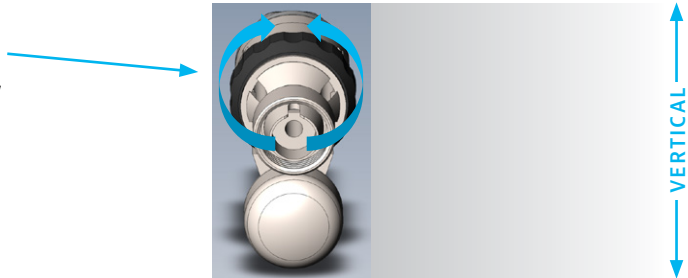
FiberChek auto focus



MT ferrule end face image

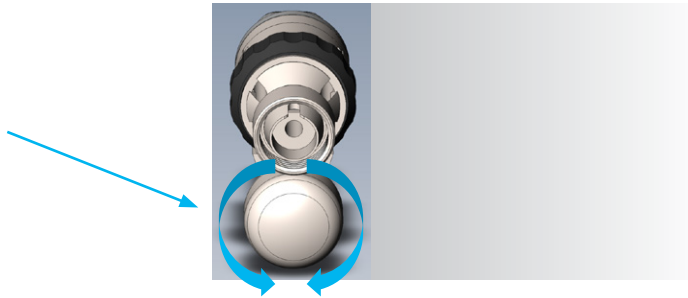
6. Adjust the image vertically using the black wheel

Rotate black wheel to vertically center the image in the field of view



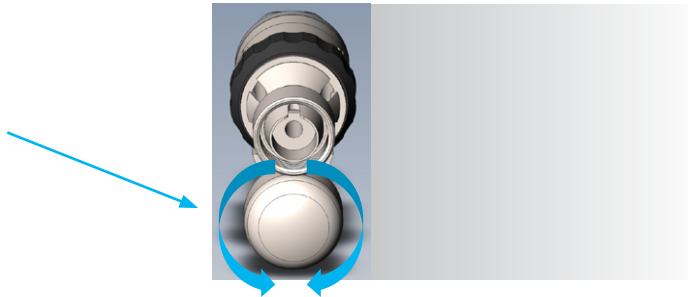
7. Pan the image horizontally using the silver knob

Turn silver knob to horizontally pan across the MT ferrule to inspect the entire row of fibers



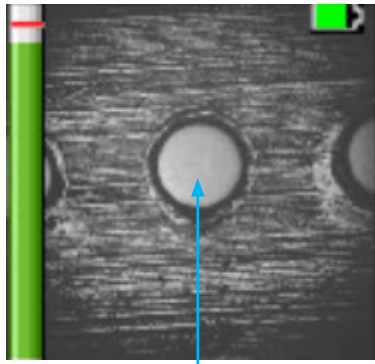
8. Pan to the left-most fiber

Turn silver knob to horizontally pan across the MT ferrule to the farthest left fiber

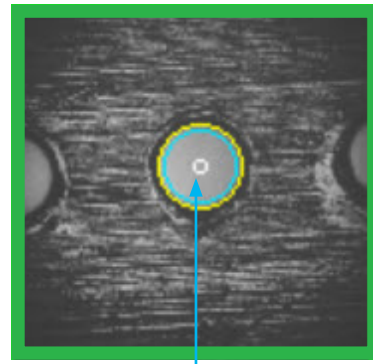


How To Inspect OptiTip MT Connectors

9. Inspect the fiber

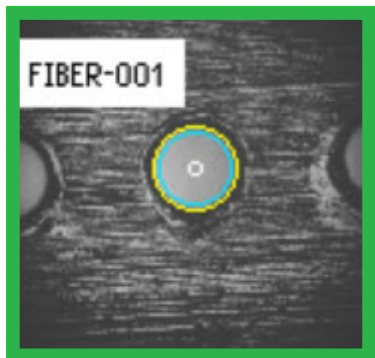


Visual inspection

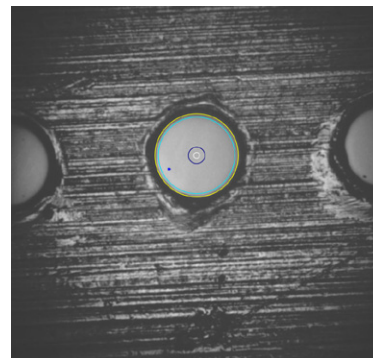


Automated analysis

10. Save the result (optional)



11. Pan right to next fiber



12. Repeat steps 9–11 until inspection is complete

